

## Sustainable landscapes:

- Build healthy soil.
- Conserve energy & water.
- Grow the right plants in the right place.
- Grow local native plants.
- Support birds & beneficial insects.
- Reduce, reuse & recycle.
- Can save you time & money.

Come and learn the basic principles for designing and creating a beautiful sustainable landscape in your own backyard or common area.

---

**Attend one class or the series!  
Classes are free of charge and  
open to the public.**

**Advance registration requested  
at [mgnv.org](http://mgnv.org) under Events.**

Questions: Call 703-228-6414  
or email [mgarlalex@gmail.com](mailto:mgarlalex@gmail.com)

The Sustainable Landscaping Winter–Spring 2018 classes are offered by Virginia Cooperative Extension Master Gardeners, serving Arlington and Alexandria, dedicated to working with the community to promote environmentally sound horticulture practices through sustainable landscape management. This series of classes draws on Landscape for Life™, based on the principles of The Sustainable Sites Initiative™ (SITES), federal and state conservation landscaping resources, and research from Virginia’s land-grant universities.

Sponsored by

**Master Gardeners of Northern Virginia**

[www.mgnv.org](http://www.mgnv.org)

and

 **Virginia Cooperative Extension**  
Virginia Tech • Virginia State University

Virginia Cooperative Extension programs and employment are open to all, regardless of age, color, disability, gender, gender identity, gender expression, national origin, political affiliation, race, religion, sexual orientation, genetic information, veteran status, or any other basis protected by law. An equal opportunity/affirmative action employer. Issued in furtherance of Cooperative Extension work, Virginia Polytechnic Institute and State University, Virginia State University, and the U.S. Department of Agriculture cooperating. Edwin J. Jones, Director, Virginia Cooperative Extension, Virginia Tech, Blacksburg; M. Ray McKinnie, Administrator, 1890 Extension Program, Virginia State University, Petersburg.

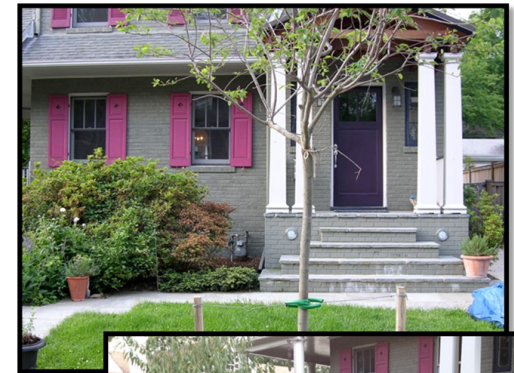
[www.ext.vt.edu](http://www.ext.vt.edu)

# Sustainable Landscaping

---

## The DIY Sustainable Yard

2018 Winter-Spring Classes



**1/17, 2/14, 3/7, 4/ 4 (7:00-8:30 pm)**

Charles E. Beatley, Jr. Library  
5005 Duke Street  
Alexandria, VA 22304

**1/30, 2/28, 3/13, 4/10, 5/1 (7:00-8:30 pm)**

Westover Branch Library  
1644 N McKinley Road  
Arlington, VA 22205

# Sustainable Landscaping 2018

## Landscape Design Basics

Sustainable landscape design builds on the unique conditions of your site to create healthier outdoor space. Learn how to make a base map for your site and basic design principles to help you plan your landscape's transformation.

**January 17 (Wednesday)**  
Beatley Library—7:00 to 8:30 pm

**January 30 (Tuesday)**  
Westover Library—7:00 to 8:30 pm

## Water Conservation

Water is our most precious resource. Learn how to capture and absorb storm water on your property to benefit your garden with the right landscaping techniques and plant choices.

**February 14 (Wednesday)**  
Beatley Library—7:00 to 8:30 pm

**February 28 (Wednesday)**  
Westover Library—7:00 to 8:30 pm

## Building Soil Health

Healthy soil is your key to success. Learn how to build soil health, how to create great compost, and how to prevent soil erosion and compaction through plant and hardscape techniques.

**March 7 (Wednesday)**  
Beatley Library—7:00 to 8:30 pm

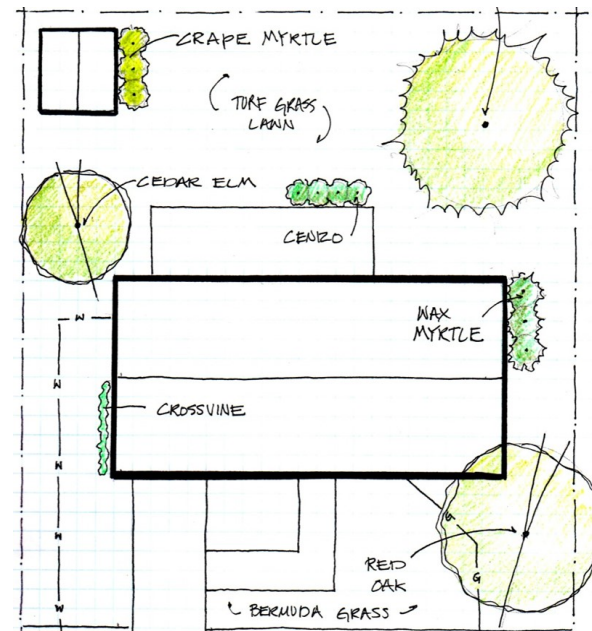
**March 13 (Tuesday)**  
Westover Library—7:00 to 8:30 pm

## Plant Selection

There's a palette of plants right for you that will thrive best in the conditions of your site. Learn how to select appropriate plants for your site, what is meant by a native plant versus a cultivar, and some best practices for planting and maintenance.

**April 4 (Wednesday)**  
Beatley Library—7:00 to 8:30 pm

**April 10 (Tuesday)**  
Westover Library—7:00 to 8:30 pm



## Problem Plants and Better Alternatives

Problem plants in the home garden can out-compete native and beneficial plants and don't support our local wildlife. They even may be invasive. Learn about alternatives to and ways to rid your yard of problem plants.

**May 1 ((Tuesday)**  
Westover Library—7:00 to 8:30 pm